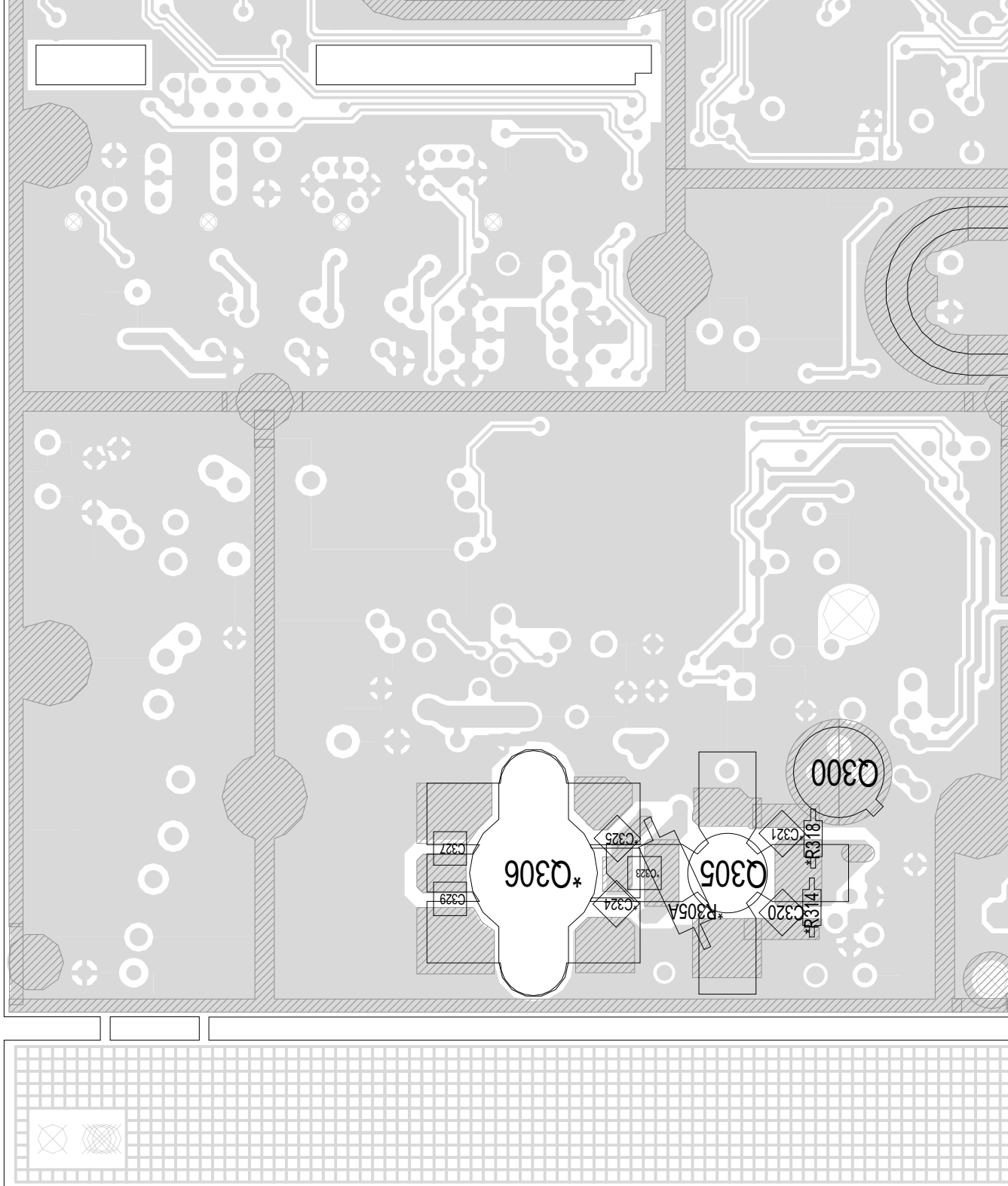
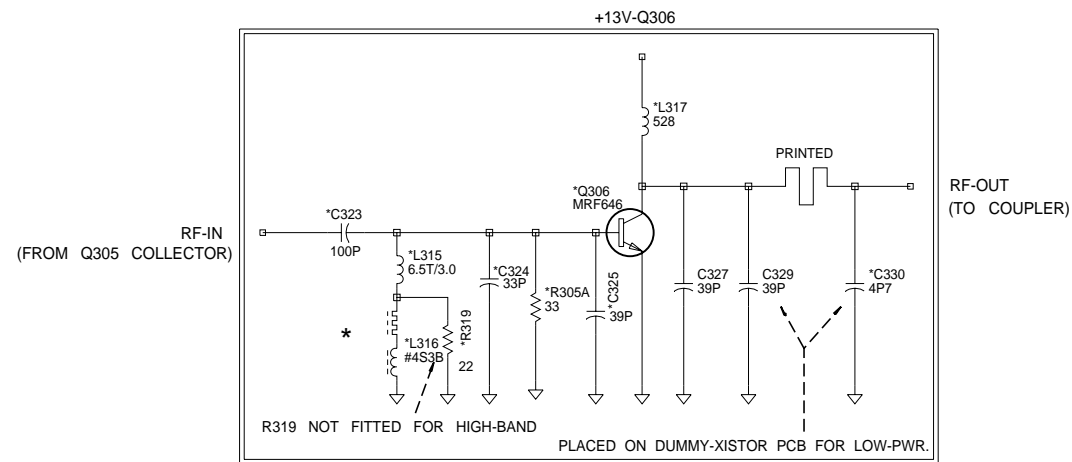


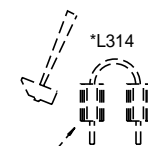
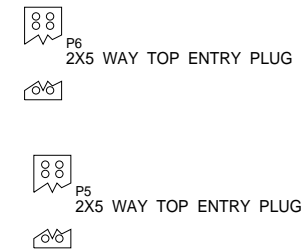
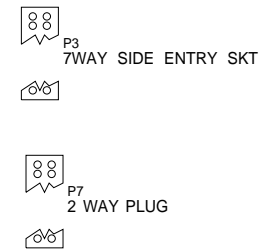
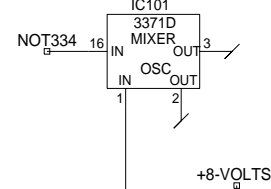
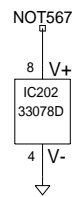
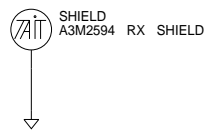
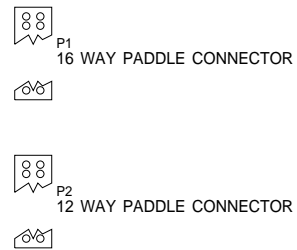
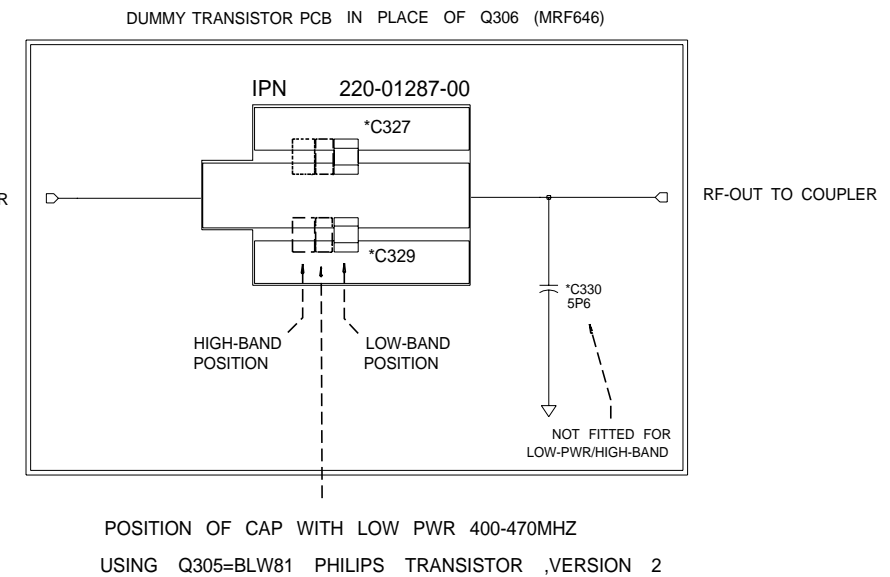
2
3
4
5
6
7
8
9



STD 25W OPTION



LOW-POWER OPTION



SMASH FERRITE BEADS FOR LOW-POWER VERSIONS

CCT SHOWN WITH HIGH-BAND VALUES

*PWR/BAND-VERSION	*C302	*C308	*C309	*C322	*C314	*C321	*C323	*C324	*C325	*C327	*C329	*C330	*C331	*C332	*C335	*C339	*C342	*C352	*C343	*C341	*C347	*C350	*C346	*R334	*R309	*R304	*R313	*R315	*R314	*R318	*R323	*R319	*C365	*L302	*L300	*L314
25W/400-470MHZ	6P8S	12PS	22PS	-	12PS	39PUH	100PAHV	39PAHV	39PAHV	47PX	47PX	6P8UH	5P6UH	10PUH	2P2UH	4P7UH	3P9UH	1P0S10	2P7UH	4P7UH	2P7S	3P9S	3P9S	22S	47S	100S	330W1	22X	-	-	33X	22ZV	1U0S	15H30	10S35	4S3B
25W/450-520MHZ	6P8S	10PS	-	22PS	10PS	33PUH	100PAHV	33PAHV	39PAHV	39PX	39PX	4P7UH	5P6UH	10PUH	-	3P9UH	4P7UH	-	3P9UH	3P9UH	2P2S	3P3S	2P2S	-	68S	100S	330W1	-	-	33X	-	-	15H25	10S23	4S3B	
LOW-PWR/400-470MHZ	6P8S	12PS	22PS	-	10PS	39PUH	-	-	-	22PUH	22PUH	5P6UH	5P6UH	22PUH	2P2UH	4P7UH	3P9UH	1P0S10	2P7UH	4P7UH	2P7S	3P9S	3P9S	22S	47S	100S	-	22X	56X	56X	33X	-	1U0S	15H30	10S35	LINK
LOW-PWR/450-520MHZ	6P8S	10PS	-	22PS	10PS	33PUH	-	-	-	18PUH	18PUH	-	4P7UH	5P6UH	-	3P9UH	4P7UH	-	3P9UH	3P9UH	2P2S	3P3S	2P2S	-	68S	100S	-	-	56X	56X	33X	-	-	15H25	10S23	LINK

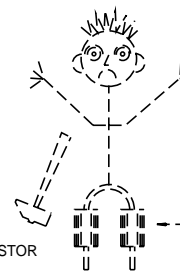
PA COMPONENTS CONTINUED

VCC COMPONENTS

RX-TRIPLET COMPONENTS

DUMMY-TRANSISTOR PCB
NOT FITTED
NOT FITTED
REPLACES Q306
REPLACES Q306

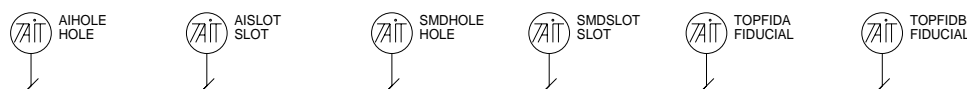
PACOMPONENTS



USING A Q305 = BLW81 PHILIPS TRANSISTOR

MR FERRITE BEAD DOESN'T LIKE LOW-POWER TIME!!

REV/ISS	AMENDMENTS	DRAWN	CHKD	D.O.	APVD	DATE
18A	ADD DUAL BAND OPTION ECO 21-0491				TS	22-02-00
13	ADDED D305,R348,#R334,#C365,C318A,C500.				YH	14-3-95
11A	MODS TO PWR CONTROL ETC				MC	
10A	ADDED Q217, Q309 & OTHER ASSORTED MODS.	J.F.	J.F.			28/7/94
9B	UPDATED EXCITER AND SYNTH LAYOUT.	M.C.				
9A	UPDATED PA, SYNTH. ADDED VIAS AROUND EDGE OF PCB.	M.C.	K.B.	D.E.	M.B.	28/8/93
8D	NO CONNECTIVITY CHANGES.	M.C.	G.S.	D.E.	M.B.	14/7/93
8C	MODIFIED NOISE BLANKER VARIANTS CH/N 93/03-118.	M.C.	G.S.			18/5/93
8B	MODIFIED VARIANTS-TABLE FOR C327 & C329, SHEET-2.	J.F.	J.F.		S.P.	14/5/93
8A	ADDED LOW-POWER VARIANTS	J.F.	J.F.			22/2/93



© TAIT ELECTRONICS
 T2000-500/600 UHF MOBILE RADIO
 POWER & BAND VARIANTS
 PROJECT: 220-01205-14 DESIGNER: YH FILE NAME: 120518c DATE: 3-Jul-00 NO.SHEETS: 2
 ID: A 2.SC. 2